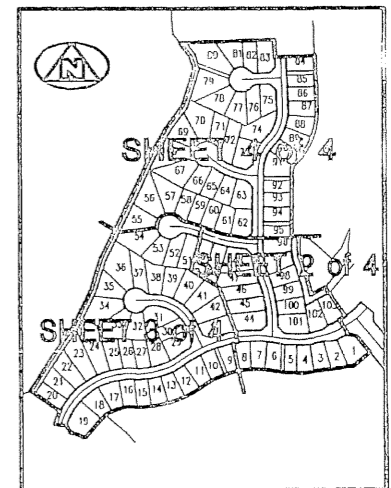
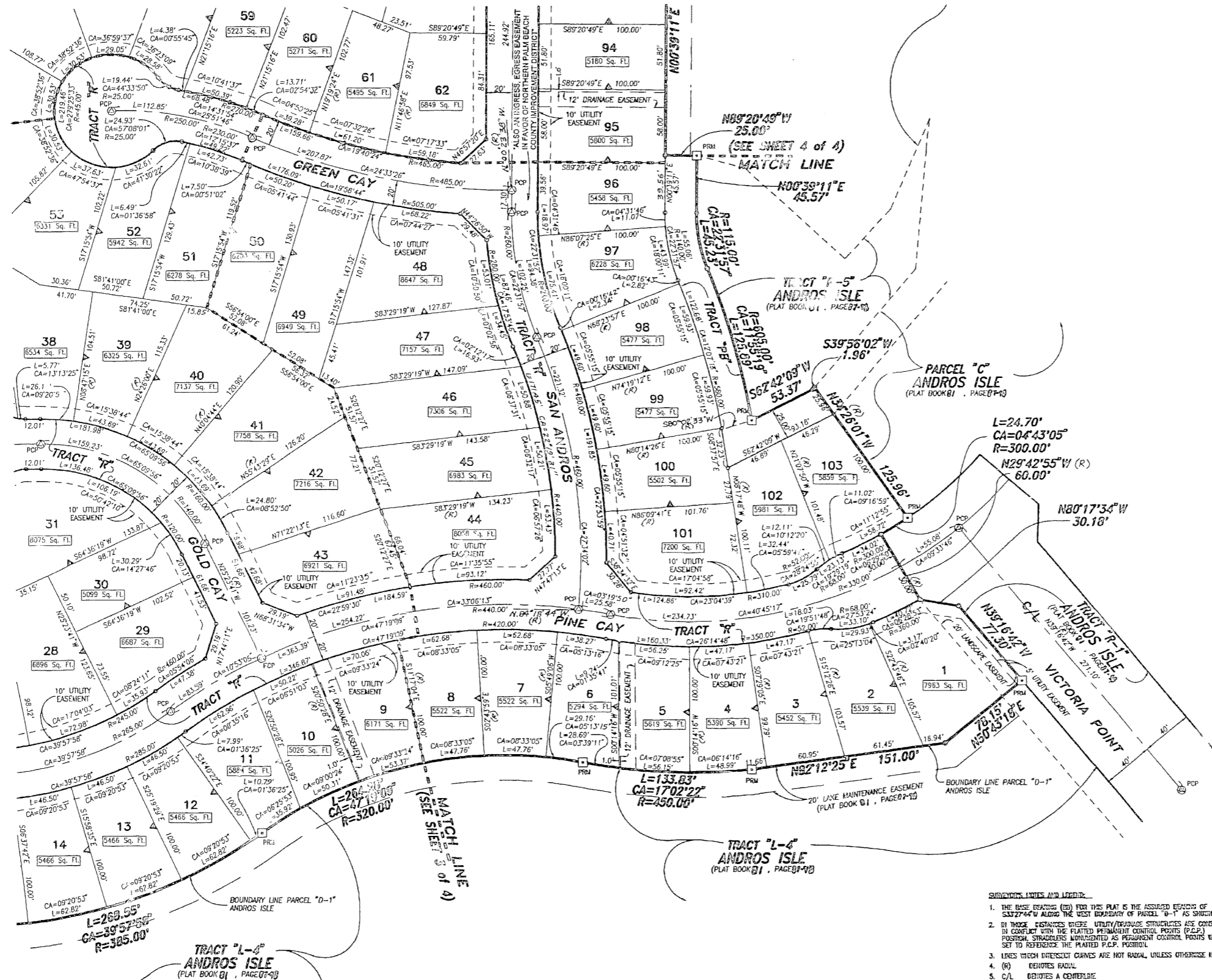
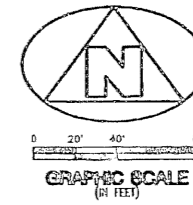


NOVEMBER 1997 **ANDROS ISLE PARCEL "D-1"** SHEET 2 of 4
 (A PART OF A RESIDENTIAL PLANNED DEVELOPMENT)

129

BEING A RE-PLAT OF PARCEL "D-1", ANDROS ISLE, RECORDED IN PLAT BOOK 81, PAGE 97-98 AND LYING IN SECTION 20, TOWNSHIP 43 SOUTH, RANGE 42 EAST, CITY OF WEST PALM BEACH, PALM BEACH COUNTY, FLORIDA



- SYMBOLS, LINES AND LETTERS:**
1. THE DASHED TRACKS (ED) FOR THIS PLAT IS THE ASSIGNED BOUNDARY OF CURVE 244° W ALONG THE WEST BOUNDARY OF PARCEL "D-1" AS SHOWN HEREON.
 2. IN THOSE INSTANCES WHERE UTILITY/DRAINAGE STRUCTURES ARE CONSTRUCTED IN CONFLICT WITH THE PLATTED PERMANENT CONTROL POINTS (P.C.P.) POSITION STRAPPLERS MOUNTED AS PERMANENT CONTROL POINTS WILL BE SET TO REFERENCE THE PLATTED P.C.P. POSITION.
 3. LINES WHICH INTERSECT CURVES ARE NOT RADIAL, UNLESS OTHERWISE NOTED.
 4. (R) DENOTES RADIAL.
 5. C/L DENOTES A CENTERLINE.
 6. (P.M.) DENOTES A SET #2424 PERMANENT REFERENCE MONUMENT (P.R.M.)
 7. (C.P.) DENOTES A SET #2424 PERMANENT CONTROL POINT (P.C.P.)
 8. (P.R.M.) DENOTES A FOUND #2424 PERMANENT REFERENCE MONUMENT (P.R.M.)
 9. (C.P.) DENOTES A FOUND #2424 PERMANENT CONTROL POINT (P.C.P.)

THIS INSTRUMENT WAS PREPARED BY WM. R. VAN CAMPEN, R.L.S., IN AND FOR THE OFFICES OF BENCH MARK LAND SURVEYING & MAPPING, INC., 4152 WEST BLUE HERON BOULEVARD, SUITE 121, RIVERA BEACH, FLORIDA.

BENCH MARK
 Land Surveying and Mapping, Inc.
 4152 West Blue Heron Blvd., Suite 121, Rivera Beach, FL 33404
 Fax: (407) 844-5639 Phone: (377) 848-2122

RECORD PLAT
ANDROS ISLE PARCEL "D-1"

DWN	AW	FB	DATE 12-01-96	WO.# P39001
CKD	FILE P39001-4.dwg	SCALE 1" = 40'	SHEET 2 OF 4	